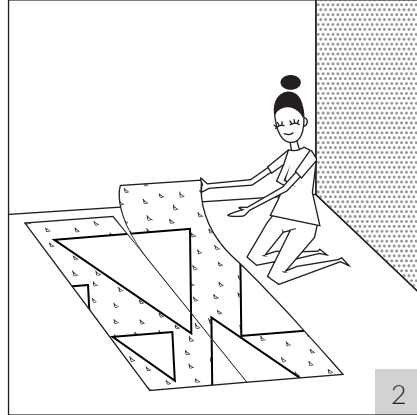
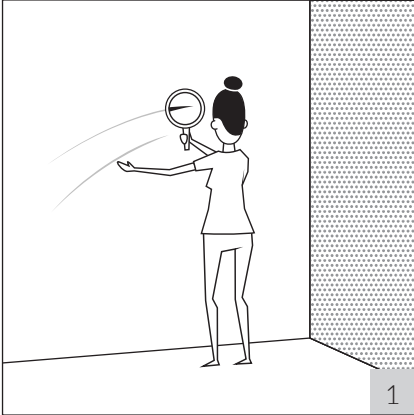


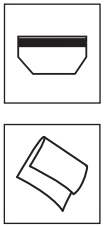
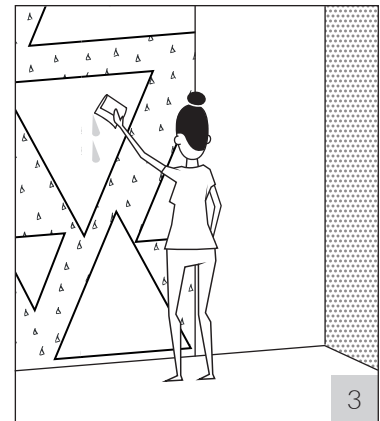
## INSTALLATION MANUAL

### BEFORE YOU BEGIN...



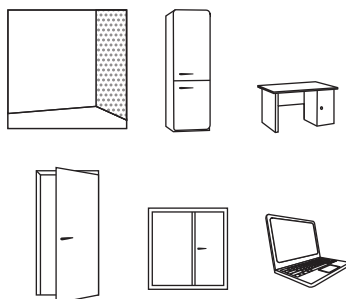
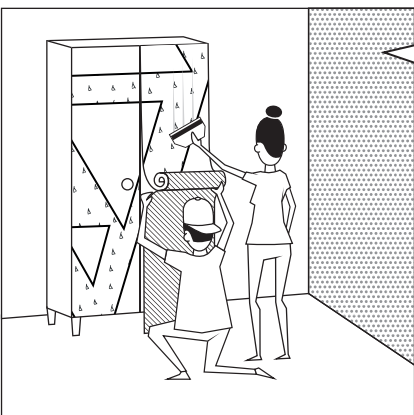
1. Make sure that you apply the print onto a smooth, clean and degreased surface.
2. Make sure that print meets your expectations and if it comes in several parts - make sure the sheets match.

### VINYL AND WASHABLE WALLPAPERS AND WALL MURALS



1. Install the print starting from the left corner of the room, from the window or door. To apply the first sheet in a perfect vertical column, you can draw a vertical line on the wall. Apply the adhesive onto the wall under the first wall mural sheet.
2. Install print from top to bottom. Unwrap it gradually and delicately stretch the print. Remember to press down on the material to remove any air pockets - it's best to do this with a squeegee. Apply the next wall mural sheet edge to edge.
3. If needed, use a paper towel to wipe off any excess adhesive collected at the print seams. Do this carefully. It's very easy to damage a print that is moistened with adhesive.

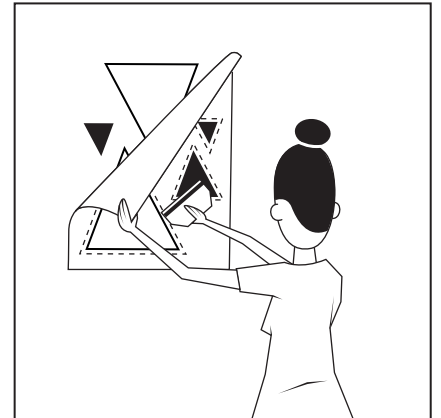
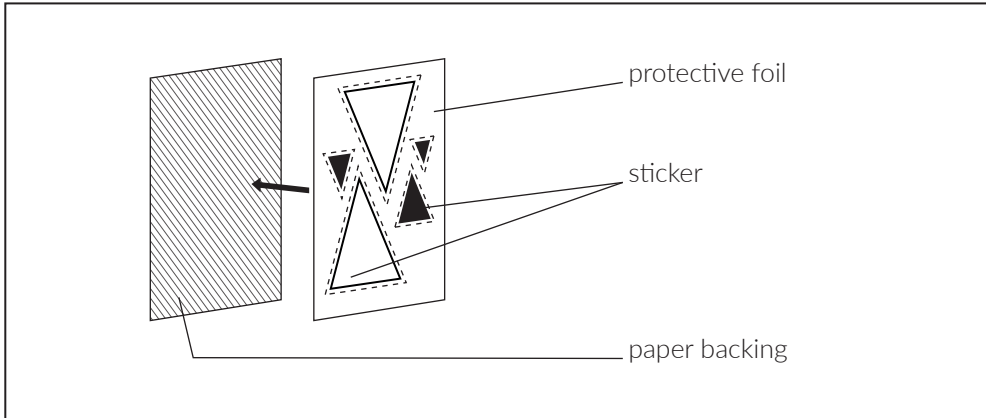
### SELF-ADHESIVE WALLPAPERS AND WALL MURALS AND STICKERS



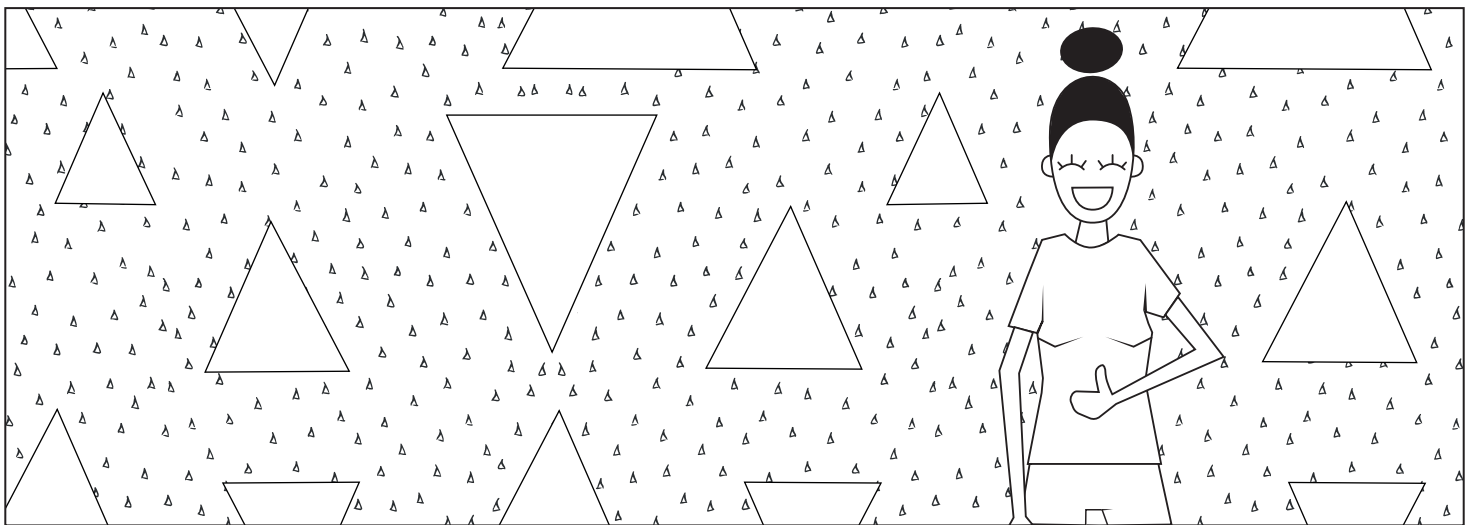
and many others...

Install the print from top to bottom, starting from the left side. Gradually remove the backing from top to bottom and delicately stretch the sheet. In the meantime, press down on the material to remove any air pockets - it's best to do this with a squeegee. If you want to, you can remove the print and reuse it again.

## WALL DECAL



Remove the paper backing so that the protective foil and sticker remain intact. Apply the sticker with the protective foil onto a smooth, clean and degreased surface. Press the sticker elements to the surface it is being applied to. Remove the protective foil, starting from the upper corners so that the sticker remains on the wall. If you need to, you can remove it and reuse it again.



**AWESOME! DISCOVER THE HAPPINESS FROM YOUR PIXERSIZED INTERIORS!**